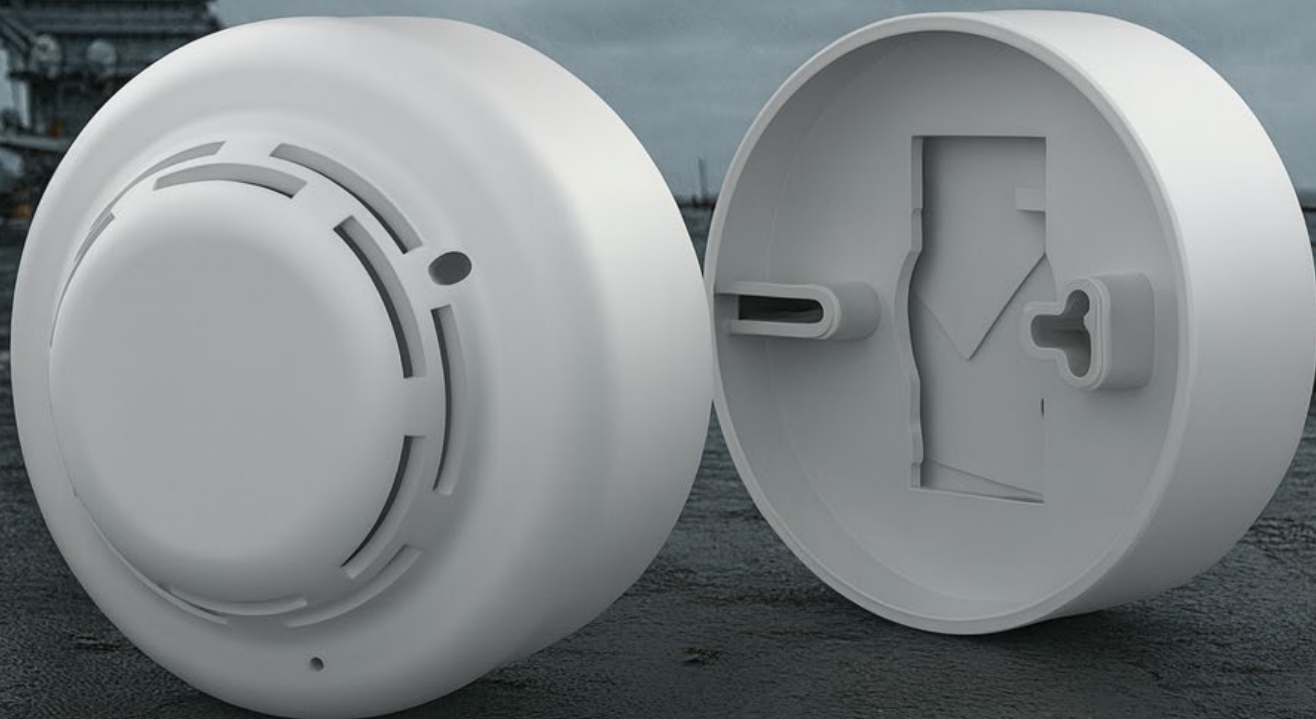


**"Critical Alert,
Immediate Response."**

MARINE MULTI (SMOKE-HEAT) DETECTOR



Marine Multi (Smoke and Heat) Detector – NE-M-40814

Addressable Point-Type Flame Detector (Compliant with TSE EN54-10 Standard)

Product Description

The NE-M-40814 Marine Multi Detector is a point-type addressable fire detector designed and manufactured in compliance with TSE EN54-5 and TSE EN54-7 standards. It integrates both smoke and heat detection capabilities in a single compact unit, ensuring reliable fire detection performance in a wide range of marine and industrial applications.

The smoke sensing element operates on the scattered or transmitted light principle, while the heat detection section utilizes a temperature-sensitive thermistor element to ensure accurate response to rapid or gradual temperature increases.

The detector communicates digitally with the fire alarm control panel and features a removable head design for easy installation and maintenance. During normal operation, the detector consumes less than 7 mA, ensuring low power demand.



Designed for A1-class heat response, the NE-M-40814 ensures early detection even in smokeless fire scenarios, where only temperature variations occur. The unit's construction provides insect protection, corrosion resistance, and humidity durability, ensuring long-term stability and reliability in harsh marine environments.

Its robust external casing and removable design allow quick mounting, easy replacement, and mechanical durability during shipment, installation, and operation.



Upon activation, the detector remains in the alarm state until a reset command is issued from the fire alarm control panel. Dual LED indicators provide visual feedback—flashing periodically in standby mode and remaining steadily illuminated during alarm condition.

Technical Specifications

| Parameter | Specification |
|-----------------------------|--|
| Model | NE-M-40814 |
| Detector Type | Marine Multi Detector (Smoke & Heat) |
| Detection Principles | Optical (Light Scattering / Transmission) and Thermistor Temperature Sensing |
| Standards Compliance | TSE EN54-5 (Heat Detection), TSE EN54-7 (Smoke Detection) |
| Communication | Addressable, digital communication with fire alarm control panel |
| Operating Voltage | 22 – 26 V DC |
| Quiescent Current (Standby) | < 7 mA |
| Alarm Indication | Dual red LEDs (steady on in alarm, flashing in standby) |
| Reset Method | Remote reset command from fire alarm control panel |
| Heat Detection Class | A1 (per EN54-5) |
| Operating Principle | Parallel operation of smoke and heat detection |
| Chamber Design | Protected external chamber for accurate smoke flow and insect resistance |
| Environmental Protection | Moisture and corrosion resistant materials |
| Construction | Removable detector head, impact-resistant casing |
| Installation | Easy plug-in base design for rapid mounting and replacement |
| Typical Applications | Marine environments, industrial areas, general fire detection systems |