

NERO
INDUSTRIES
Advanced Reliability



NR-GLM
40-38-37 MM
SMOKE GRENADE
LAUNCHER

THE FEATURES OF NR-GLM 40-38-37 MM. SMOKE LAUNCHER

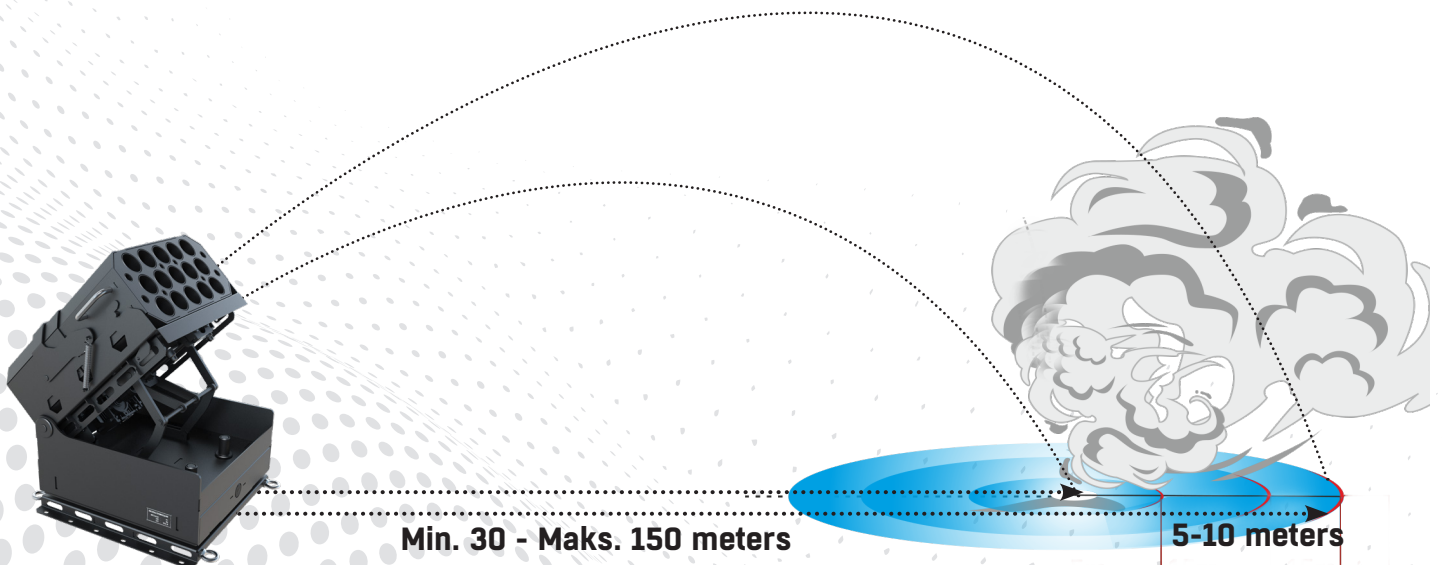
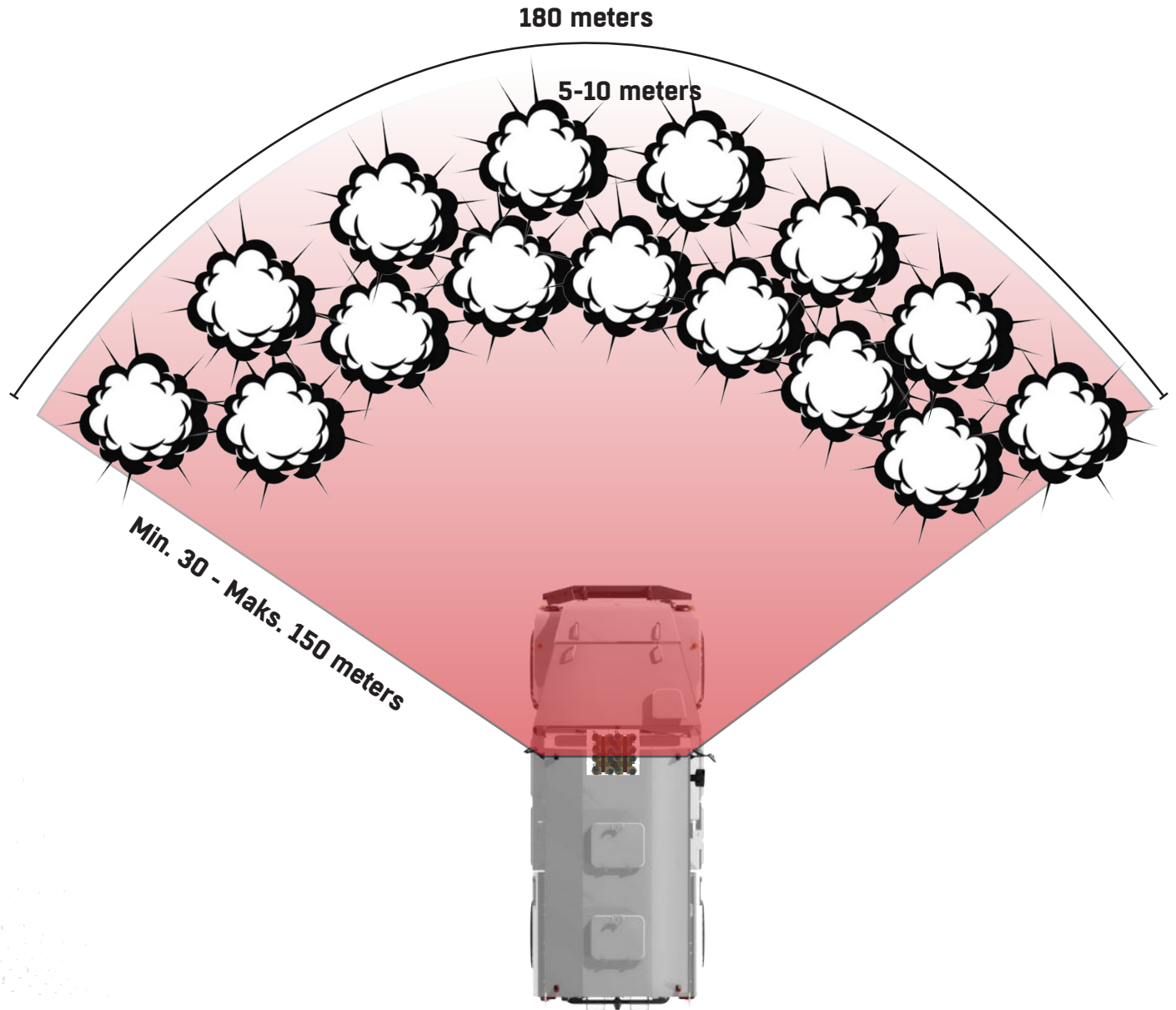
The Smoke Launcher is designed and produced to shoot 40/38/37 mm. smoke cartridge at the standards of MIL-STD 810, MIL-STD 1275, MIL-STD 461 and EMI/EMC. 15 different cartridges at different diameters chambered in the Smoke Launcher System can be discharged by turns or collective fire. Launcher has capability to shoot at the range of 30-150 m. with travers of 120° and elevation of 45°. The launcher can be directed with control box which is made up of 7 inch digital monitor. The eyesight can be provided with integrated cameras to launcher even under intense sun shine and utter darkness or recording can still be in process in order to watch later on.

Features	Value	Unit
Launcher Diameter	40	Milimeter
Type of Cartridges	Smoke and Gas	
The Cartridge Diameters in Use	40/38/37	Milimeter
Operating Voltage	12 - 24	V DC
Surveillance Capabilities	CMOS Color Camera	
	IR Night Vision Camera	
Shooting Range	30-150	Meters
Number of Tubes in Launcher	15	Pieces
Travers Capability	120°	Degrees
Elevation Capability	45°	Degrees
Operating Temperature	0,5-40 °C	Santigrat Degrees
Receiver	Aluminium	
Lenght	380-395	Milimeter
Height	360-375	Milimeter
Widht	400-420	Milimeter
The Lenght of Barrel	192 - 207	Milimeter
Average Weight	50	Kilograms
Intercommunication	CANBUS /RS422 / RS485	
Video Recording Period	400	Hours
Testing Standards	EMI/EMC: MIL-STD461F, MIL-STD-1275E, MIL-STD-810G	

MAIN COMPONENTS

Name	Description
NE-L-581670	7 inch Digital Control Screen
NE-L-581673	40/38/37 mm. Smoke cartridge
NE-L-581674	Adjustible Receiver

SYSTEM OPERATION SCHEMATIC



AREAS OF USAGE

The smoke Lancher system of an vehicle that is in skirmish or ambushed provides scooting maneuver or break off the laser engagement of weapons by shooting smoke cartridge and creating smoke curtain towards the engaged weapon.

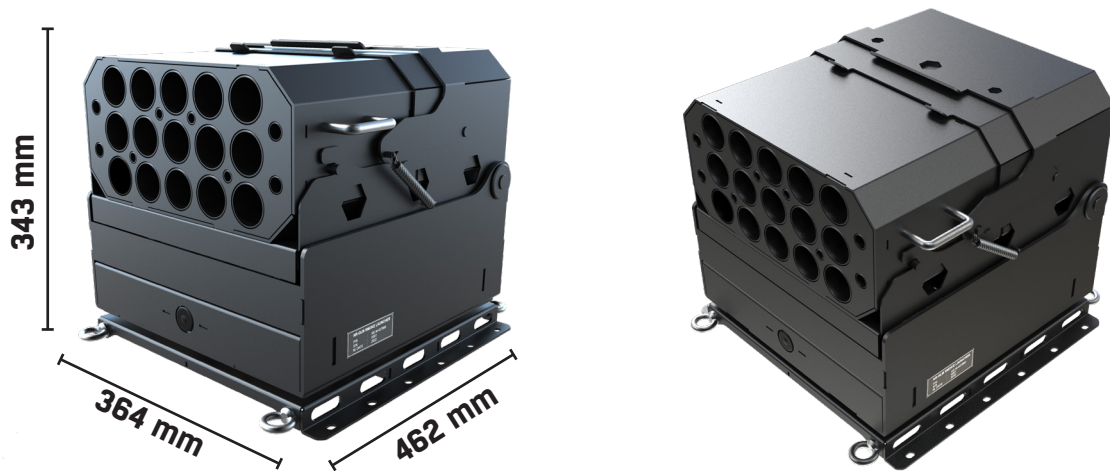
The smoke Lancher system is used to cover the approach of support force in order to tow of combat vehicle which is ambushed or broken.

It is used after firing and before the scooting maneuvers of weapons which can not stay in their position long time in order not to be targeted that have high muzzle flash like mounted howitzers, mounted mortars, rocket and/or missile systems.

It is used for the maneuvers of vehicles which has high economical value.

It is used for the maneuvers of command post vehicles which are conducting the operation as well.

DIEMENTIONS



CONTROL BOX



1.	FIRE LINE 1 GRENADES	5.	JOYSTICK
2.	FIRE LINE 2 GRENADES	6.	NIGHT MODE ON/OFF
3.	FIRE LINE 3 GRENADES	7.	BIT/BUILT-IN-TEST BUTTON
4.	POWER ON/OFF	8.	INFO

ADVANTAGES:

Manufactured and tested in accordance with NATO Standards. It can fire up to 15 barrels simultaneously, separately or together in certain configurations. It is protected against counter attacks thanks to its Advanced Control box, it is easy to use with its user-friendly interface, and past operations can be examined with its record keeping feature. It can also communicate directly with the vehicle with the CANBUS infrastructure.